



Connecting To The *TitanNet* Network

Student Guide

This document describes new procedures for connecting to the Internet and using campus network resources

Contents of the Guide

Summary of Important Tips	page 2
Browsing the Internet with Internet Explorer	page 3
Browsing the Internet with Google Chrome	page 4
Browsing the Internet with Firefox	page 5
Signing in to the AIM dashboard	page 6
Browsing the Internet with Safari	page 7
Connecting to Westminster Network Resources	
Portal	page 8
Westminster E-mail (GroupWise)	page 9
WC Network Drives	page 10

Summary of Important Tips for Connecting Computers to the *TitanNet* Campus Network

ATTENTION - New Students

New students **MUST** change the original temporary password you received for your new network account before attempting to use the Internet. Changing the password is not optional. Unless this temporary password is changed, you will not be able to access the Internet.

For ALL Students

New Application for Connecting to the Internet

Beginning this fall there is a different application in place for connecting to the Internet from the residence halls. First, as in the past, students connect an Ethernet cable from their computer to a network wall jack in the room (residence halls do not currently have wireless access). To use the Internet, students must log in with their Westminster username and password when they first open an Internet browser. (Usernames and passwords will be the same as the ones students use in the labs and for their campus e-mail.) As long as the browser remains open, access to the Internet is available; when the browser is closed, the user will have to log in again the next time a browser is opened (there is a maximum of 24 hours that a browser can remain open without logging in).

Anti-Virus

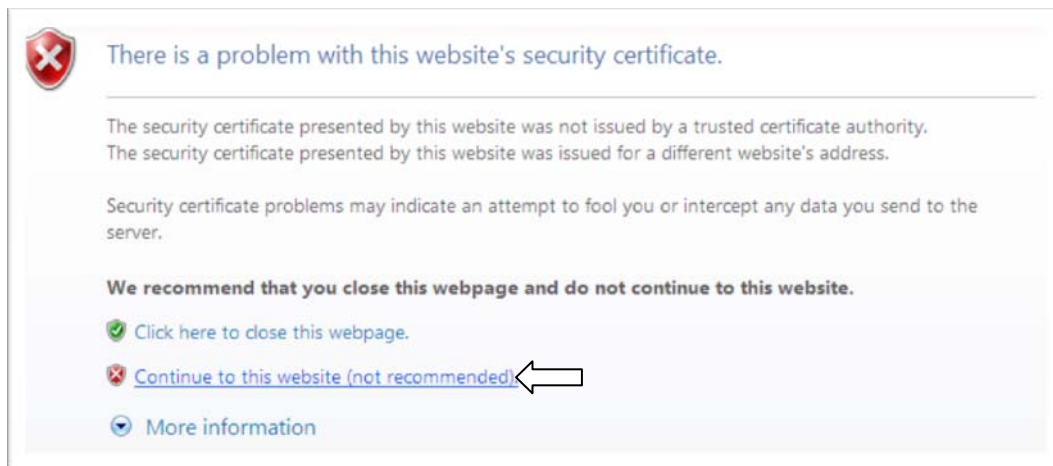
To protect individual student machines and other resources on the campus network, all students are required to have an antivirus software package on their machine and to update the antivirus package for virus detection signatures at least once a week.

Reporting Problems:

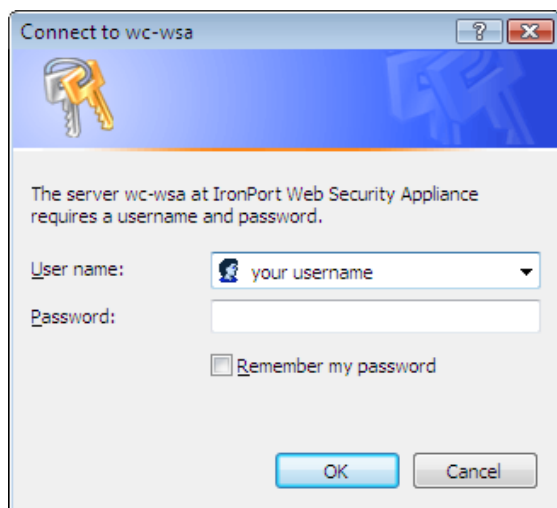
To report any issue with using the Internet or a problem with your connection to the *TitanNet* network, please contact the Call Center at 724-946-6900. We will look into the issue as soon as possible.

Browsing the Internet with Internet Explorer:

1. Click on Internet Explorer Icon.
2. You may get a page that says "There is a problem with this website's security certificate". Click on "Continue to this website (not recommended)".



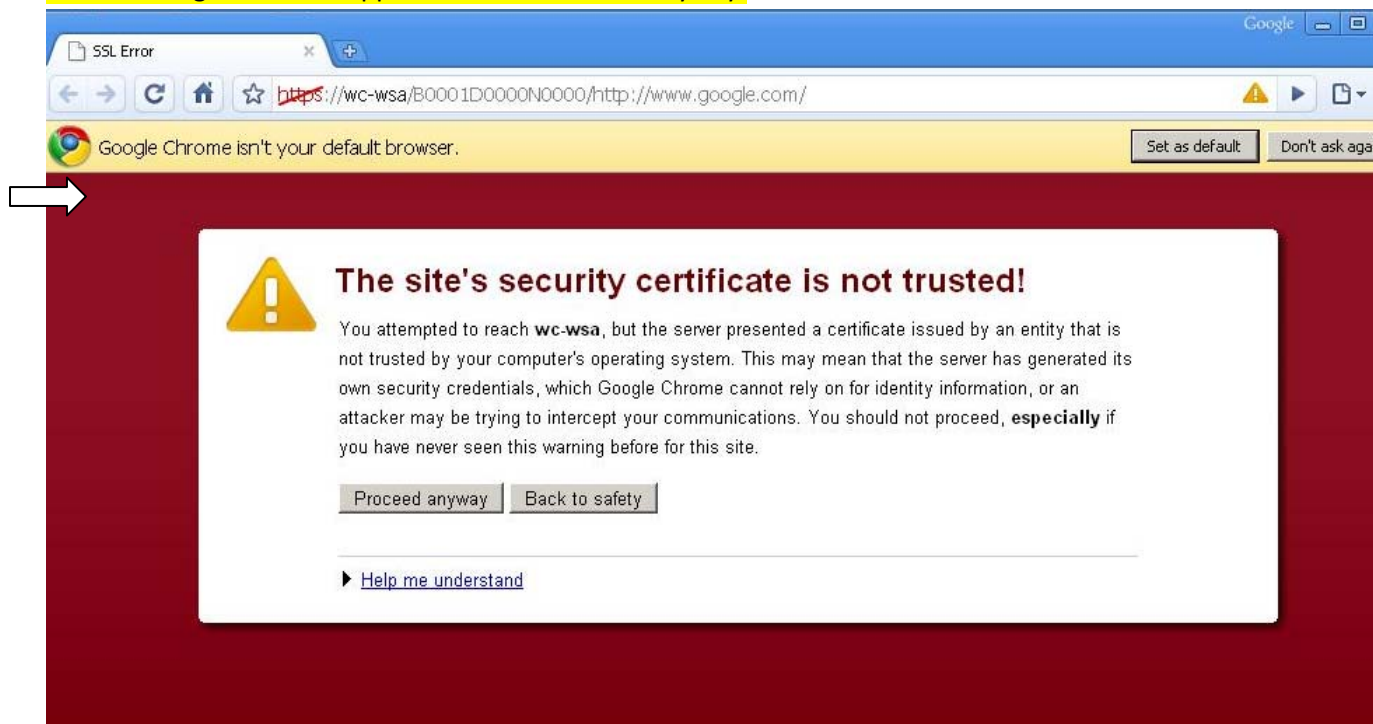
3. A new window will pop up asking you to log in. Type in your Westminster username and password and press OK.



4. You are now able to get out to the internet.
5. Please make sure that your antivirus and spyware protection are up to date.
6. If you open a new Internet Explorer browser while the current browser is still open, you will not have to sign in again. But if you open a different browser like Google Chrome or Firefox you will have to log in again.
7. If you close all of your Internet browsers you will have to sign in again when you open a new one.
8. You will be required to enter your username and password every 24 hours even if you choose to keep your Internet browser open.

Browsing the Internet with Google Chrome:

1. Open Google Chrome.
2. The following screen will appear. Click on Proceed anyway.

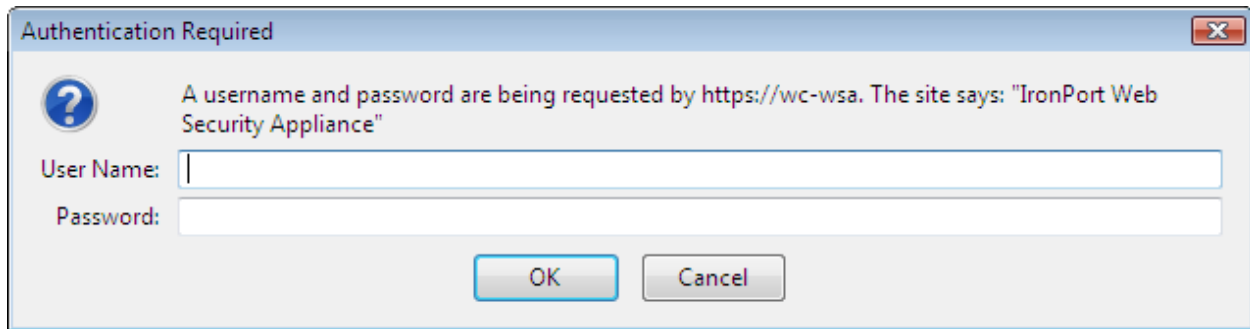


3. Type in your Westminster username and password and press Login.

4. You are now able to get out to the Internet.
5. Please make sure that your antivirus and spyware protection are up to date.
6. If you open a new Chrome browser while the current browser is still open, you will not have to sign in again. But if you open a different browser like Internet Explorer or Firefox you will have to log in again.
7. If you close all of your Internet browsers you will have to sign in again when you open a new one.
8. You will be required to enter your username and password every 24 hours even if you choose to keep your Internet browser open.

Browsing the Internet with Firefox:

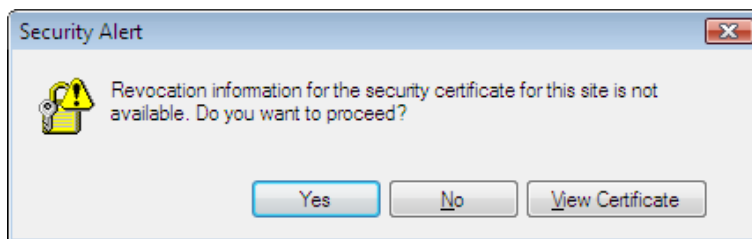
1. Open Firefox
2. A new window will appear asking you to sign on.



3. Type your Westminster assigned username and password and press Ok.
4. You are now able to get out to the Internet.
5. Please make sure that your antivirus and spyware protection are up to date.
6. If you open a new Firefox browser while the current browser is still open, you will not have to sign in again. But if you open a different browser like Internet Explorer or Google Chrome you will have to log in again.
7. If you close all of your Internet browsers you will have to sign in again when you open a new one.
8. You will be required to enter your username and password every 24 hours even if you choose to keep your Internet browser open.

Signing in to the AIM dashboard:

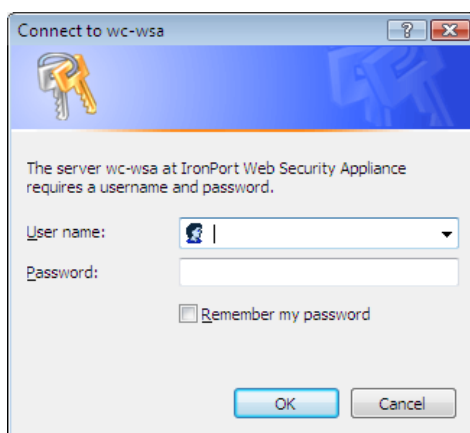
1. You will have to sign in to use the Aim dashboard.
2. Type in your AIM username and password like normal.
3. You will see a security alert window pop up asking if you want to proceed. Click Yes



4. Another security alert window will pop up. Again click on yes.



5. Lastly sign in using your Westminster username and password.



6. You should not have to do this again until you log out and want to get back on.

Browsing the Internet with Safari

1. Open Safari.
2. If the following message appears, click "Continue".



3. Type in your Westminster username and password. Then click login.



4. You are now able to get out to the Internet.
5. Please make sure that your antivirus and spyware protection are up to date.
6. If you close your Internet browser you will have to sign in again when you open a new one.
7. You will be required to enter your username and password every 24 hours even if you choose to keep your Internet browser open.

NOTE: If there are problems with regard to Safari, Internet Explorer or Firefox can be used as a workaround.

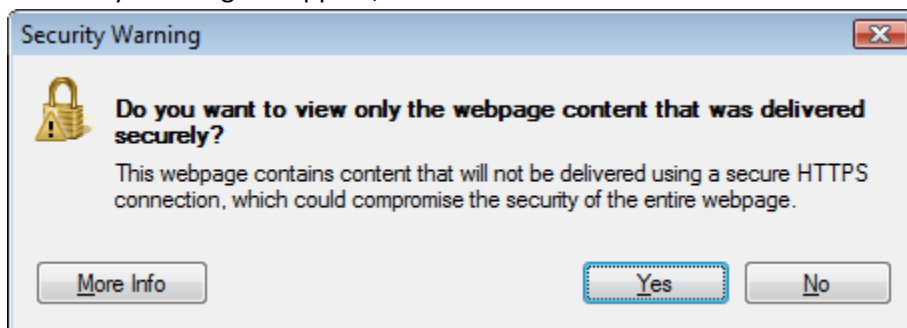
Connecting to Westminster Network Resources

Portal: To connect to Westminster Portal, complete the following steps:

1. Connect to the Internet using Internet Explorer as explained on page 3.
2. Go to the homepage of Westminster College. www.westminster.edu
3. Find the RESOURCES section below CALENDAR in the middle of the page.



4. Click on the link called Portal.
5. Enter your Westminster Username and Password then click login.
6. A Security Warning will appear, click on No.



7. A yellow bar might appear at the top of the page. If so, right click it and choose "Display blocked content".

Westminster E-mail: perform the following steps to access your Westminster GroupWise e-mail account:

1. Go to the homepage of Westminster College. www.westminster.edu
2. Find the RESOURCES section below CALENDAR in the middle of the page.

CALENDAR

Tuesday, August 25, 2009
 RA Training
 Titan Marching Band Camp

Wednesday, August 26, 2009
 RA Training
 Titan Marching Band Camp

RESOURCES

 **GroupWise WebAccess**

 **Portal**

 **Library**

 **H1N1 Flu Information**

3. Click on the link called GroupWise WebAccess.
4. The following screen will appear. Select either WebAccess 1 or WebAccess 2.

GroupWise WebAccess

These are WebAccess gateways through which you can access your GroupWise email. Please click on one of the links below:

WebAccess 1

WebAccess 2

If you are using a mobile device please use:
WebAccess Mobile

5. Enter your Westminster username and password into the login box.



Novell® GroupWise® 8

Username:

Password:

Connection Speed

High (Broadband)

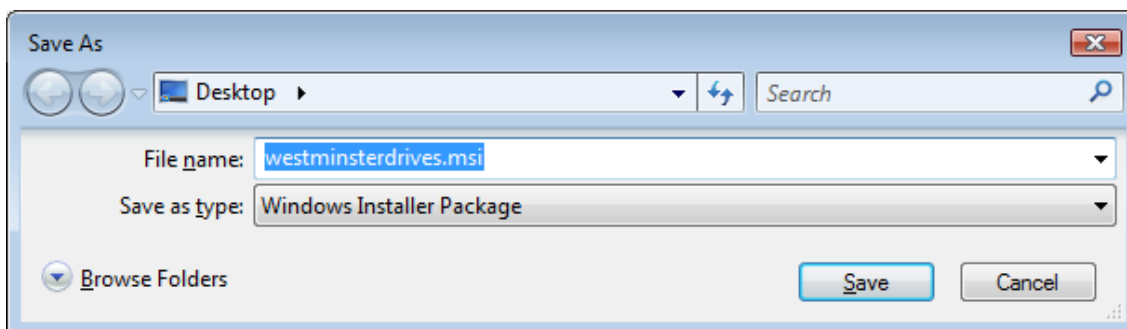
Low (Dial-up)

Use the basic interface [More Information](#)

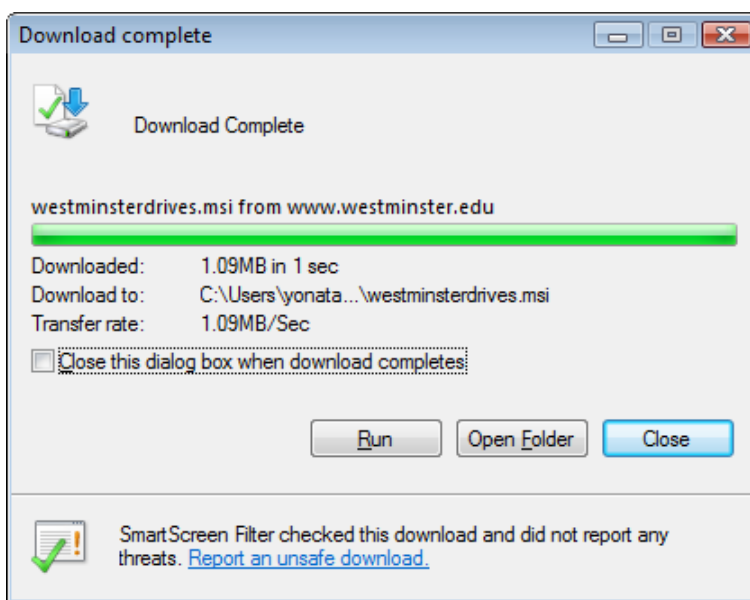
Remember my settings

WC Drives: to connect to Westminster network drives do the following (NOTE: this application works on-campus only; use the Portal to access drives from off-campus)

1. Go the following site: http://www.westminster.edu/resources/computing/titannet_support.cfm
2. Find the operating system you are using and click the word “here” in the section for that operating system.
3. When asked to save software to your computer, make sure you put it where you can find it later (Desktop is always a good place to put it).



4. Click “Save”.
5. In the Download Complete box press the “Run” button.



6. In the next window press “Run” again, and if asked, allow the program to install.
7. All windows will disappear.
8. Go to START menu; select ALL PROGRAMS; choose WESTMINSTER COLLEGE folder; select WESTMINSTER DRIVES
9. Click on the Westminster Drive application. A window will appear asking you to log in using your Westminster Username and Password.
10. You should now be able to go to My Computer and see your Westminster network drives.